

Nearby Weather Featured:
A chance of scattered
flurries later this week.

THE ARCTIC NEWS

Published Every
MONDAY,
WEDNESDAY,
FRIDAY

VOL. 44

No. 93

ANCHORAGE, ALASKA. Monday, December 16, 1985

Single Copy 25cts.

Tulugaq Townhouses Nearing Completion as Ecological Oversight Shapes Final Phase

Molly Howard
News Contributor

Kotzebue, Alaska — Nearly eighteen months after initial plans were publicised, the Tulugaq Town Houses project is facing its terminal phase, fostering a significant milestone for both environmental and constructional cooperation in the area. The establishment of these townhomes is intended to meet increasing dwelling needs in the Kotzebue area.

Predominantly serving these efforts is Henry Council, who has recently taken over as the ecological advisor for Chance Construction, the gravel company responsible for supplying essential construction materials. Council's facilitation and association with the project illustrates a transition in how development projects will be handled in Kotzebue, especially in ecologically responsive locations.

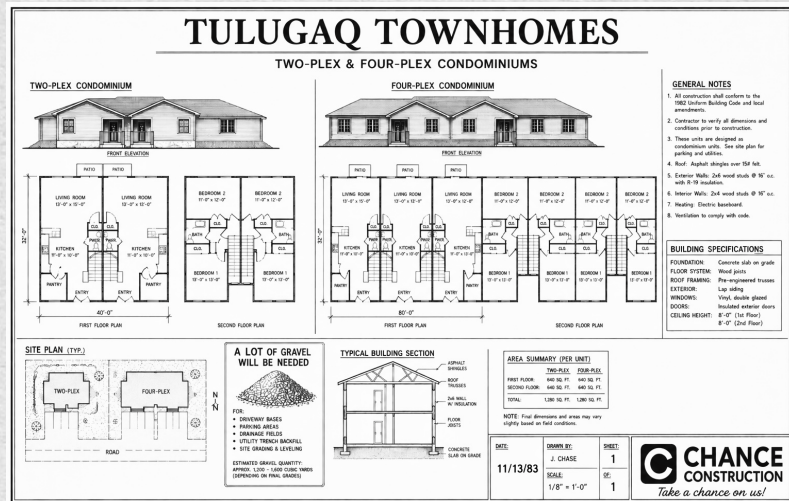
A blueprint of the neighborhood and included amenities has recently been proposed and approved, which include the ex-

act quantitative requirements for gravel, along with the structural engineering details and interior/exterior views. These blueprints (above), along with the construction reports, have all been reviewed under the assistance of Henry Council.

The condominiums, depending on varied floor plans and accommodative housing, are around 1,280 in square footage. Models will be offered in both two-plex and four-plex layouts. Community members have voiced a mix of optimism and circumspection following the release of the blueprints. Noah

Kivigak, a subsistence advocate and research assistant under Dr. Barry Raven, stated his apprehension about the continuation of the project:

"While I agree that the development is a positive step towards increasing residential opportunities in the area, I have to admit I'm concerned about the environmental impacts. They're using a lot of pricey gravel to build and develop these complexes, and gravel is a material we're already stingy with. I just want to make sure we're using our materials responsibly. Somebody is for sure getting rich."



A blueprint of the Tulugaq Townhome Development. Photo courtesy of Henry Council.